



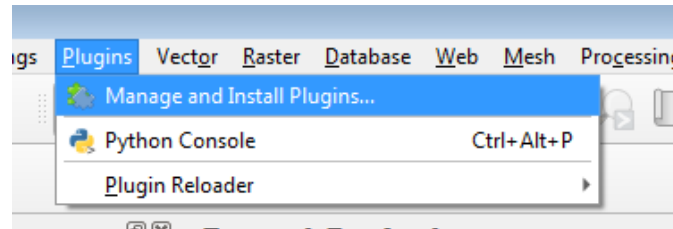
How to install QGIS plugin « CHLOE – Landscape metrics »

Hugues Boussard – Paul Meurice – Jacques Baudry – UMR INRAE – ESA –
Agrocampus Ouest BAGAP
Winter School – Alice Project – 09/12/2020

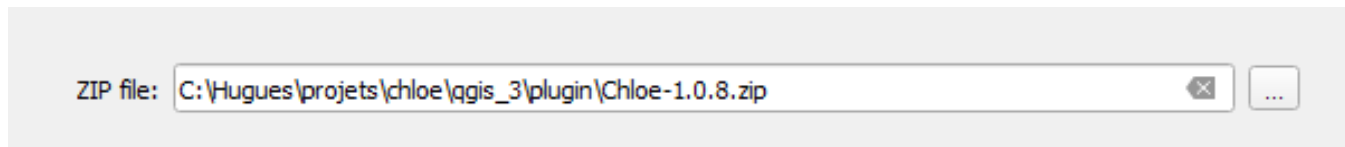


INSTALLATION QGIS 3.16 + PLUGIN CHLOE_3_16_1 (1)

- Download and install QGIS 3.16
- Download and install JAVA JRE1.8 (minimum)
- Open QGIS 3.16
- Click on « Extension », then « Manage and Install Plugins... »

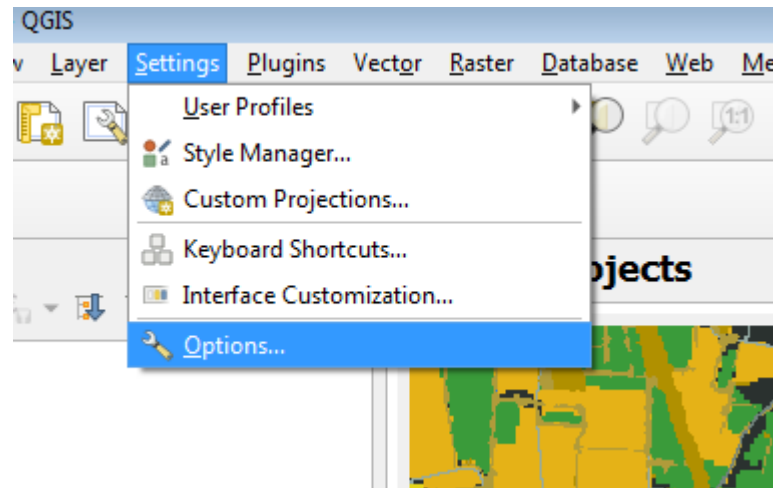


- Open the “zip” plugin « Chloe_3_16_1.zip » and click on « Install Plugin »

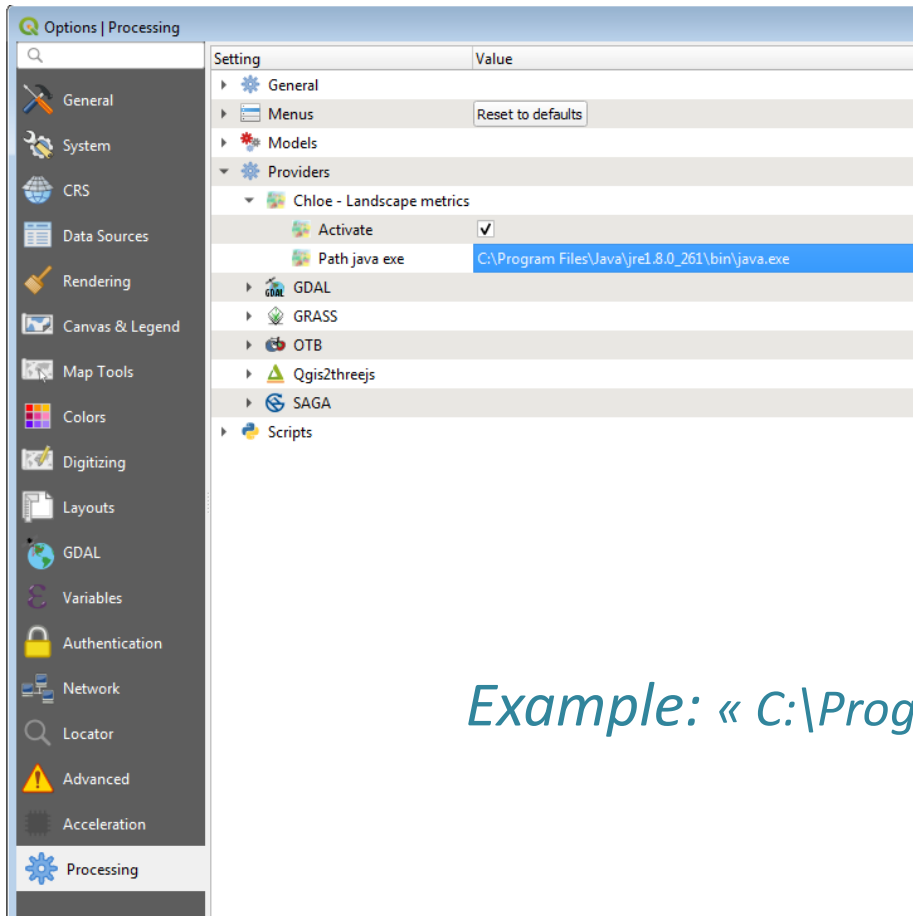


INSTALLATION QGIS 3.16 + PLUGIN CHLOE_3_16_1 (2)

- get/copy the path to your java « bin »
example: « C:\Program Files\Java\jre1.8.0_151\bin »
- under QGIS, click « Settings » -> « Options »



INSTALLATION QGIS 3.16 + PLUGIN CHLOE_3_16_1 (3)

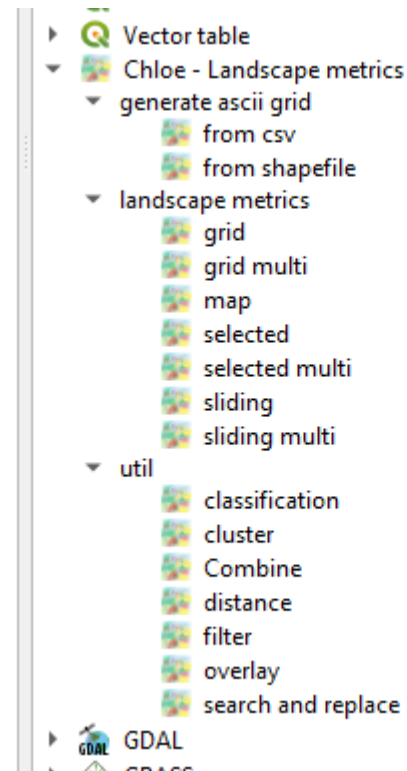


- Go to « Processing », « Providers », « chloe – landscape metrics », « path java exe ». Then, paste the path of your JAVA « bin » folder
- Add « java.exe » and click « OK »

Example: « C:\Program Files\Java\jre1.8.0_151\bin\java.exe »

INSTALLATION QGIS 3.16 + PLUGIN CHLOE_3_16_1 (4)

- Check you are under the Lambert93 projection through « project » → « properties »
- Check « Chloe – Landscape metrics » is there on the processing toolbox



Thank you

